



Salmon Find Refuge Through North Fork Recovery Project

In June 2001, Whatcom Land Trust completed the largest salmon habitat conservation project in the history of Whatcom County. Using a grant from the Washington State Salmon Recovery Funding Board, the Land Trust purchased 443 acres of Chinook salmon habitat on the North Fork Nooksack River near Kendall. The project, *North Fork Recovery*, will protect 2.7 miles of spawning habitat on the Nooksack River, Racehorse Creek and Bear Creek.

"*North Fork Recovery* is highly significant," stated Gordon Scott, Conservation Director for Whatcom Land Trust. "Fishery officials have surveyed Racehorse Creek and Bear Creek for over a decade and they are some of the most productive Chinook salmon streams in all of Whatcom County."

The two properties consist of a 395-acre rural forestry tract along Racehorse Creek acquired from the Trillium Corporation for \$1,080,000, and a 48-acre recreation property on Bear Creek purchased from Ron and Ione Gienger of Lynden for \$85,000. Testament to both parties' commitment to salmon conservation, both Trillium and the Gengers agreed to sell their properties to the Land Trust at prices significantly below fair market value.

The Land Trust is pleased to have the Lummi Natural Resources Department (LNR) and the Nooksack Natural Resources Department (NNR) as partners in this project. LNR and NNR



photo: Gordon Scott

The area that includes the confluence of Racehorse Creek and the North Fork of the Nooksack River is now protected salmon habitat.

will restore about 50 acres of conifer riparian forest and provide habitat-monitoring services. Large conifer trees along rivers and streams form pools and log jam habitats when they fall into the river, an important factor in salmon recovery. LNR and NNR will be responsible for planning the restoration work and will employ retrained fishermen and displaced timber workers on their crews. "Salmon won't be brought back without projects such as this," commented LNR Restoration Specialist Jim Hansen.

An outright purchase such as *North Fork Recovery* reduces the need for government regulatory programs, as

the properties are placed under Whatcom Land Trust conservation management in perpetuity. It is the simplest, fastest and most economical way to aid salmon recovery, and the Land Trust is thankful for the partners who made it possible.

Nooksack River Habitat Protected by WLT since 1989

| | |
|------------------------|--------------------|
| Conservation Easements | 470 acres |
| Donations or Purchases | 885 acres |
| TOTAL | 1,355 acres |

Hilda Bajema

"I farmed, and want people in the future to have a chance to live directly in touch with land that produces food."

-Hilda Bajema

Volunteer Thanks

Thank you to Tom Pratum for donating his professional skills to improve and update our website. Tom is currently working to load a new map of our properties, featuring more property descriptions and photos. Take a look at www.whatcomlandtrust.com!

Thank you to Tom Emrich, who spent two hours cutting long grass at Deming Homestead Eagle Park to make the area more enjoyable for visitors.

Thank you to Aurora Fox, Bob Keller, Laura Pitts and Stuart Zemel for staffing an outreach table during the Ski-to-Sea weekend. Thanks also to Village Books for letting the Land Trust park our table in front of their store, and providing interesting books to lure folks to stop and ask questions.

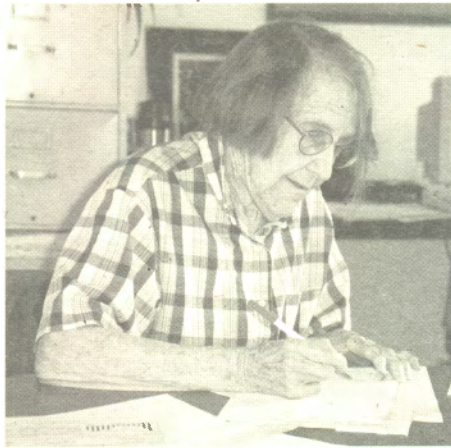


photo: Rod Burton

For ten years Hilda has helped keep financial order for the Trust.

In 1950 it was a long journey from Massachusetts to Bellingham and then East Badger Road. Fortunately for Whatcom Land Trust, Hilda Bajema and her husband Garret made that trip to begin a new life as dairy farmers. Hilda operated the dairy until 1974 when she moved to East Hemmi Road. Last year she moved to the Willows Retirement Center. Not that she has retired!

Hilda Bajema attended the 1983 founding sessions for a land trust in Whatcom County, meetings called by Roger Van Dyken and propelled by Bob Muenscher, Ron Polinder, David Syre, Jim Wynstra and others. These initial meetings took place in the basement of Lynden's Dutch Mother's Restaurant.

Hilda served as Secretary until

1990. She was our Treasurer for a decade from 1991-2001. Hilda has also been a member of Whatcom County's Solid Waste and Land Use Code commissions, as well as a volunteer at the YWCA and Planned Parenthood. She has been involved with the League of Women Voters for years.

The Land Trust, however, is different. "My first concern has been farmland," she reflects, "for if we don't have food, we don't live very well. I farmed, and want people in the future to have a chance to live directly in touch with land that produces food."

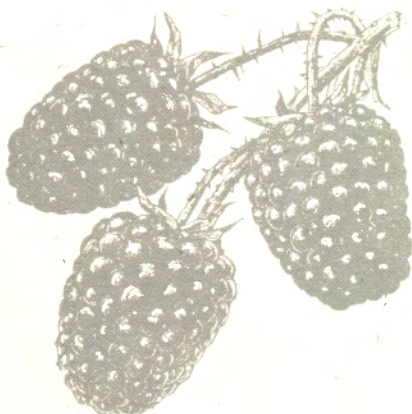
Here's a telling sample of Hilda Bajema's approach to life: born in the silent movie era, she taught herself how to use a computer in 1994 in order to keep the Land Trust books. An extremely frugal person, she is determined that not a nickel of Trust money be lost or wasted. The title should have been "Guardian Treasurer."

At the outlet of Squires Lake we installed a bench honoring Hilda's years of service to us and to Whatcom County. We invite everyone to relax by that stream, gaze at the lake, enjoy the quiet and say thanks to one determined woman with a passion for land conservation.

2001 Whatcom Land Trust Officers

- Sharon Digby, President
- Wendy Walker, Vice-President
- Mike Ryan, Treasurer
- Cindy Klein, Secretary

Thanks to all our officers for their dedication and commitment to the Land Trust.



The Mission of the Whatcom Land Trust is to preserve and protect wildlife habitat, scenic, agricultural and open space lands in Whatcom County for future generations by securing interests in land and promoting land stewardship.

- Newsletter Editorial Team Rod Burton, Jessica Raley
- Design and Layout Donated by Roderick C. Burton - Art & Design
- Contributors Bob Keller, Gordon Scott, Jessica Raley, Andrea Hood

Conservation Easement Donated by Patricia Wenke

Today much of Whatcom County looks like a quiet rural paradise. Small lanes, wooded tracts and rolling farmland greet those who visit our region. But we know that this will change as more people discover the beauty of this corner of North America and move here to make it their home. Working in cooperation with landowners to preserve our rural character is one of the goals of Whatcom Land Trust. This summer, Pat Wenke and Whatcom Land Trust signed a conservation easement protecting the rural values of her five-acre property in central Whatcom County.

Growing up in urban Spokane, Pat says she knew very little about wildlife until she met her late husband, Don. She remembers Don helping his father, Francis Wenke, a well-known wild bird rehabilitator, to care for injured birds.

"I learned a lot watching them care for those birds. In many ways my decision to donate this conservation easement to Whatcom Land Trust is a result of working with Don and his father," said Pat.

In the summer of 1997, Pat invited the late Dick Beardsley, then a Board member of the Land Trust, and Conservation Director Gordon Scott to visit her property. Walking around

"In 100 years this will be a little jewel."

Dick Beardsley, 1997

Pat's wooded five-acre site, they discussed the value of conserving small parcels of land in the context of a rapidly growing county population. Gordon remembers Dick commenting that someday there could be shopping malls, subdivisions and freeways throughout the county, making conservation projects of all sizes increasingly important.

The conservation easement allows Pat, and future landowners, to continue rural residential uses and forest management that will improve wildlife habitat. The easement does not allow the property to be subdivided or used for any commercial purposes. Pat still owns the land and can sell it or give it away as she wishes. The conservation easement will remain forever with the land Pat Wenke has chosen to protect.

Ruth Kelsey Monument to be Installed on Donation Land

In honor of Ruth Kelsey, a large stone has been selected and is currently being cut by artist Michael Jacobson. A commemorative plaque will be mounted on the stone, per her wishes. The monument will be installed this summer on the land that Ruth donated to Whatcom Land Trust in 1991 — land that is now the proud neighbor to an eagles' nest. Once we have the monument in place, donors to the plaque/stone fund will be invited to an on-site celebration in memory of

Ruth, which will be timed to disturb the eagles as little as possible.

David Nugent, executor of Ruth's estate, donated two of her Whatcom County paintings to the Land Trust. One sold at the *Great Outdoors Auction*. The other, of Lake Samish, now hangs in our office.

Thank you, David, and to everyone else who helped with the plaque and stone. It's very satisfying to carry out the wishes of a benefactor such as Ruth Kelsey.

360-734-5249 3310 Northwest Ave., Bellingham, WA 98225 Lic. # A1BUIL*122CP

Recipient of a 2000-2001
Washington State Department of Ecology

*Solid Waste Reduction
& Recycling Award*

Our environmental commitment hasn't gone unnoticed...

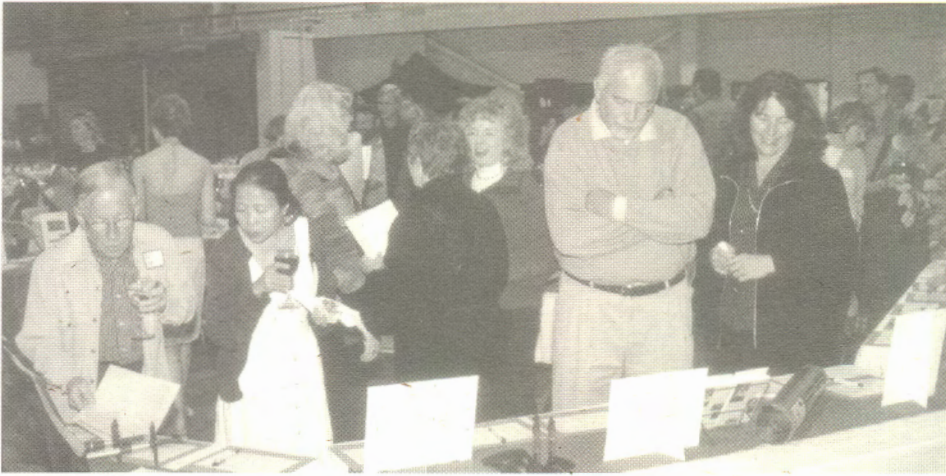
A-1 BUILDERS
INC

QUALITY REMODELING
Rick Dubrow, First Hammer

Auction a Big Hit

continued from page eight

Auction Yo



Kurt Eickmeyer photo, courtesy of Wood Stone

Participants study the many Silent Auction offerings.

ers will have guides who are dedicated members of the Trust.

Over 200 people attended the event, many of them new to the Land Trust and its work. The upbeat atmosphere successfully conveyed that land stewardship is a joyful, rewarding social mission.

Volunteers ranged from high school students and long-time volunteers to the County Executive, Pete Kremen, as Master of Ceremonies. The list is long. (Please see the *Bedrock of our Success* article for a complete listing.) Even with all the volunteers, Administrative Assistant Jessica Raley's work in the office before and after the auction was essential. She also designed the green gift certificates many of you received for your items.

And naturally, there's always the bottom line: Whatcom Land Trust net-

ted \$28,222.14 from the *Great Outdoors Auction!*

The Auction Committee is similar to the group that created our *Whatcom Places* book—exceptional enthusiasm, skills, effort and delivery. Their most frequent comment over the past four months has been "What can I do to help?"

Still, the going would have been rough had we not hired Gaye Godfrey, a professional auction consultant. Her advice, directions and encouragement were crucial. Through Gaye we found an excellent auctioneer in Tom Pasma of Bow: local, effective and a lover of the great outdoors.

Thank you to those who attended and helped to create such a special evening. To everyone who couldn't come, we expect you will get another opportunity in the future.

It's always dangerous to thank people because it's too easy to overlook a person or organization that made vital contributions. We apologize if your role in the *Great Outdoors Auction* is not mentioned in this newsletter. Please let us know if that's the case.

2001 Auction Committee Chair

Bob Keller (His standing ovation at the auction said it all.)

2001 Auction Committee

Pam Behee, Sheilagh Brown, Kent Chasson, Gene Davis, Aurora Fox, Aimée Trebon Frazier, Chris Moench, Patty Nelson, Laura Pitts, Larry Simkins, Geri Walker, Stuart Zemel.

Donors

Over 130 individuals and businesses donated high-quality auction items. That's far too many to print, and we wouldn't want to be selective. Thank you to everyone who donated items — you made our auction an auction!

We wish to thank the following groups for their generous contributions

Boundary Bay Brewery, Ed Bennett - Emerald Bay Events, Byron Davis - Fairhaven Red Apple, Barry Kramer - Fourth Corner Nursery, Todd Jones - New Whatcom Interiors, John Blethen -



Water Resources Consulting, LLC

Peter Willing, Ph.D.

1903 Broadway
Bellingham, Washington 98225
e-mail: pwilling@telcomplus.net
(360) 734-1445 FAX: (360) 676-1040

mark anderson LAND AND ESCROW COMPANIES

Mt. Baker's Leader in Real Estate Sales and Escrow Services Since 1967

Mark Anderson, G.R.I.
(360) 592-5181

Mt. Baker Highway at Nugent's Corner

unteers are Bedrock of Success

Premier Graphics, John Busch and Premier's fabulous staff - Roderick C. Burton-Art & Design, Rod Burton - Salishan Vineyards, Joan Wolverton - Wood Stone Corporation, Frank Milward, Keith Carpenter, Harry Hegarty and Wood Stone's superb staff - Zemel's Farm Fresh Foods, Henry Zemel.

Auction Volunteers

Mailings, set-up, take-down, registration, displaying items, bartending, waiting on tables, endless errands — *The Great Outdoors Auction* involved

hundreds of tasks. The Land Trust deeply appreciates all those who helped with the crucial nitty-gritty before, during and after the event. In addition to our tireless Auction Committee, the following folks deserve praise:

Jan Adams, Sarah Bakke, Megan Bays, John Blethen, Dave Campbell, Connie Clement, Randy Corris, Barbara Davidson, Elysia Ewing, Paige Godfrey, Cindy Franklin, Jennifer Hahn, John Harrison, Ann Hayden,

Catherine Heimbuger, Andrea Hood, Cindy Pfeiffer-Hoyt, Megan Pfeiffer-Hoyt, Russ Pfeiffer-Hoyt, Sara Hill, Sandy Jilton, Pat Karlberg, Jeff McDugal, North Moench, Michael Moore, Aleece Nelson, Autumn Nelson, Gary Nelson, Joe O'Keefe, Joe Peabody, Dorothy Sherwood, Susan Simkins, Mardi Solomon, Harvey Stone, Marie Thorn, Debbie Todd, Lan Totten, Wilma Totten, Aline Wanne, Meika Weiner.

The Land Trust's greatest asset is people who cherish the beauty and wonder of this place, and are willing to act. Again, thanks.



Kurt Eickmeyer photo, courtesy of Wood Stone

Delicious food prepared by Wood Stone and served by a waitstaff of dedicated volunteers helped make The Great Outdoors Auction memorable.

Bagelrise
6:30 a.m. mon-fri
(Sat. 7:30am - Sun. 8am)
THE Bagelry
A Wholesome Tradition
1319 Railroad Ave.
676-5288

Wood Stone Corp. Joins Business Partner Ranks

We're pleased to announce that Wood Stone Corporation is now a Business Partner to the Land Trust. They provided an excellent auction venue, and also graciously lend their conference room once per month for our Board of Directors meetings.

If your business or organization is interested in supporting Whatcom Land Trust operations through our Business Partner program, give us a call at 650-9470.

Elan Vital
LONGEVITY INSTITUTE

Andrew Pauli, M.D.
Medical Director &
Health Coach

- ∞ Anti-Aging Medicine
- ∞ Wellness Care & Prevention
- ∞ Natural Treatments for Chronic Diseases
- ∞ Advanced Hormone Replacement Therapy
- ∞ Human Growth Hormone
- ∞ Lifestyle Education
- ∞ Detoxification
- ∞ Weight Loss
- ∞ Cognitive Enhancement
- ∞ Nutritional Supplements

1116 Key Street, Suite 200, Bellingham, WA 98225-5224
360.527.9785 866.288.4524 Fax: 360.527.9789
Email: mail@elanvital.WS <http://www.elanvital.WS>

Property Tours to be Repeated in 2002

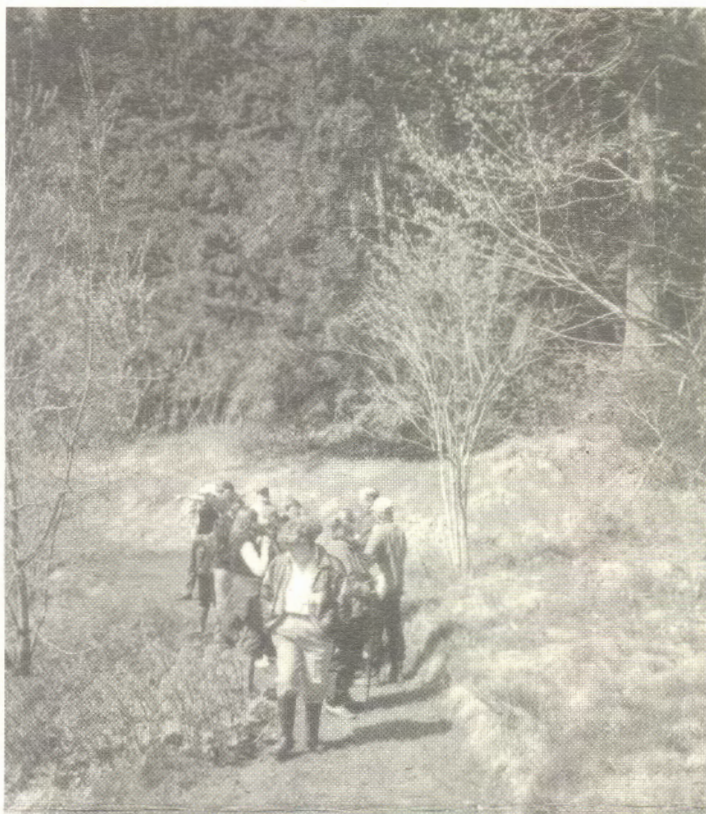


photo courtesy of Katy Begney

Patricia Otto opened her property for a tour in April. The property features a highly developed wildlife habitat which includes nesting boxes for wood ducks and barn owls.

As our pilot tour series was so well received, the Land Trust is planning to repeat the tours beginning in January 2002. See the last issue of our newsletter for a general idea of what to expect—though there may be some changes and surprises.

There are still a few spots available for our Teddy Bear Cove tour on Saturday, August 25 from 10:00 a.m. to 1:00 p.m. Reservations are required—please contact our office for more information. You can reach us at 650-9470 or info@whatcomlandtrust.com.

New Administrative Assistant Joins WLT

Whatcom Land Trust is pleased to welcome Katherine Freimund as our new Administrative Assistant. Katherine brings an extensive and diverse background to the Trust, with emphasis on administrative, computer and volunteer coordination skills. Employed most recently with Corpolongo and Associates, Inc., she taught at the Northwest Indian College and served for three years with the Peace Corps. Originally from Boston, she earned a BA in geography at the University of Chicago and an MPA at Suffolk University School of Management. In addition to active involvement at Columbia Elementary School, Katherine writes the *Echo's* "Raving Mombat" column.

Annual Membership Celebration: Save the Date, Bring a Friend

The 2001 Annual Membership Celebration will be Sunday, September 30 at Berthusen Park in Lynden from 2:00 – 6:00 p.m. Awards will be presented, food will be eaten and fun will be had. Watch the mail for your invitation!

This event will be a fun way to introduce others to the Trust. Direct, person-to-person contact is one of the best ways to spread the word about the Whatcom Land Trust. Bring some friends with you. You'll all have a good time, and they can learn about our Mission and accomplishments.

To get to Berthusen Park, go North on Guide Meridian through the two Lynden traffic signals. At the next intersection (Main Street) turn left. Turn Right on Berthusen Rd., and continue North about a mile to the park.

Community Forest Opens

Whatcom County Parks & Recreation is pleased to announce that Canyon Lake Creek Community Forest will be open to the public beginning July 30, 2001. Contact County Parks at (360) 733-2900 for details.



RE/MAX
Whatcom County, Inc.
Each Office Independently Owned and Operated

Julie Carpenter, A.B.R., G.R.I.
The Honest and Caring REALTOR®

913 Lakeway Drive
Bellingham, Washington 98226
Office: (360) 647-1313, Ext. 3040
Office: (360) 384-1313, Ext. 3040
Voice Mail/Pager: (360) 715-7575
Fax: (360) 671-8022



S H K

ARCHITECTS, Inc.

Environmentally Sensitive • Sustainable Designs

Susan Holman Kartman, A.I.A.

360 • 738 • 3499 (ph)
738 • 0119 (f)
1500 12th St.
Bellingham, WA 98225
design@shkarchitects.com



Call For Outreach Volunteers

The Land Trust invites anyone interested in helping to staff booths at local farmer's markets and the Northwest Washington Fair to contact our office. We'll pair experienced and new volunteers so it will be fun and educational. You can reach us at 650-9470 or info@whatcomlandtrust.com.

Community Corner

During April and May of this year, Whatcom Land Trust continued its efforts to meet more Whatcom County citizens and introduce them to the work of the Trust. April's meeting at the REI store in Bellingham's Sehome Village was hosted by Land Trust member Bob Langan. Laura Pitts, a valued member of the Outreach Committee, hosted May's meeting at Sudden Valley.

In April 2001, Whatcom Land Trust completed a grant from Whatcom

Community Foundation that funded our membership drive, of which the neighborhood gatherings were part. The year-long membership drive resulted in nearly 200 new and formerly lapsed members joining the Trust and generated a variety of high quality outreach materials.

We look forward to more person-to-person meetings. Please contact us if you're interested in having a community gathering in your neighborhood!

Jessica Raley Leaves Legacy of Organization

"Working with Jessica has been a treat. She is very professional — being her supervisor has been a breeze. We wish her well in her next endeavor." — Sharon Digby, WLT President

It is hard to believe, but Jessica Raley has only worked at the Trust for just over a year. In that brief time she transformed our office and our procedures. Her organizational skills and orderly ways have made everything run more smoothly and appear more professional.

An Administrative Assistant doesn't often have the opportunities for large-scale accomplishments. The effects of Jessica's skill and dedication have been cumulative, felt in many small increments. One place where her efforts were essential for a large-scale success was the *Great Outdoors Auction*.

One of the many projects that has made a significant difference was her work with volunteer Sally Hansberry, turning the jumble of the Trust's photo archives into a usable system of organized photo albums.

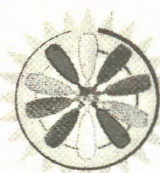
Jessica feels her greatest organizational accomplishment has been with the WLT database. Her improvements have left us with a valuable tool for tracking fundraising and membership efforts.

Jessica is leaving her position to pursue educational in-

terests. "To be totally immersed in the program, I need to be a full-time student," Jessica said about her goal to finish the Graphic Design program at Whatcom Community College.

To pursue their career goals, Jessica and her partner will need to leave the area in a year or two. In the meantime she hopes to help WLT as a volunteer on some specific projects.

Thank you, Jessica, from the Board and all of those involved in the Trust. You've made a big difference. You were a pleasure to work with, and we will miss you.



**N.W. ALTERNATIVE
ENERGY**
Solar Electric Systems
Design
Sales
Installation

Doug Salkeld
5925 Rutsatz Rd.
Deming, WA 98244

(360) 592-5574
dgsalkeld@yahoo.com

HENDERSON BOOKS

734-6855

Cash Paid for Books

Bellingham's Largest Used Book Store
Used - Rare - Recent Titles

35 Years Book Buying Experience Shows in Our
Quality Stock and the Prices We Pay

116 Grand Downtown Bellingham

proposals **copy** *life stories*

webtext *Correspondence*

brochures

manuscripts

CGK WORDSMITH

writing
rewriting & editing
proofreading

Cheryll Greenwood Kinsley
voice & fax // 360•671•1585
cheryllk@msn.com
cheryllk@aol.com



NON-PROFIT ORG.
U.S. POSTAGE
PAID
BELLINGHAM, WA
PERMIT NO. 219

WHATCOM LAND TRUST P. O. Box 6131 • Bellingham WA 98227

Managing Board

President

Sharon Digby, Van Zandt

Vice-President

Wendy Walker, Blaine

Secretary

Cindy Klein, Everson

Treasurer

Mike Ryan, Bellingham

Registered Agent

Bruce Smith, Bellingham

Board Members

Mark Anderson, Deming

Carl Batchelor, Whatcom Co.

Hilda Bajema, Bellingham

Rod Burton, Bellingham

Bob Carmichael, Bellingham

Bill Carroll, Ferndale

Rand Jack, Van Zandt

Bob Keller, Bellingham

Advisory Board

Henry Bierlink, Lynden

Joan Casey, Bellingham

Mike Finger, Bellingham

Rosemary Flora, Everson

Clare Fogelsong, Bellingham

John Gillies, Lynden

Elaine Gold, Bellingham

Phyllis Graham, Blaine

Herman Miller, Everson

Cornie Noteboom, Lynden

Kerry Thalhofer, Acme

Roger Van Dyken, Lynden

Shirley Van Zanten, Lynden

Staff

Conservation Director

Gordon Scott

Administrative Assistant

Katherine Freimund

301 W. Holly St.

Suite #U-4

Bellingham, WA 98225

Phone: 360-650-9470

Fax: 360-650-0495

E-mail:

info@whatcomlandtrust.com

http://www.whatcomland.com



Community Support Makes Auction a Smashing Success

On June 2, Whatcom Land Trust held its first-ever fundraising event, "The Great Outdoors Auction," at the Wood Stone Corporation near the Bellingham Airport. We knew in advance that an auction would be extremely time and labor intensive, and thus required more than one goal to justify its undertaking. We identified our goals as follows: the auction must directly support the mission of the Land



Kurt Eickmeyer photo, courtesy of Wood Stone

Trust; should reach non-members; create goodwill and enthusiasm for land conservation; engage members eager to volunteer for the Land Trust; and finally, it should raise money.

Wow! Mission accomplished!

With very few exceptions, auction items involved contact with land, landscape art, outdoor recreation and literature, Land Trust property tours, and travel. On various trips, buy-

continued on page four